

INSTRUCTIONS FOR USE

BEFORE USING THE APPLIANCE

SAFEGUARDING THE ENVIRONMENT

**PRECAUTIONS AND GENERAL
RECOMMENDATIONS**

HOW TO USE THE FREEZER

**HOW TO DEFROST AND CLEAN THE
FREEZER**

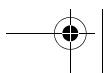
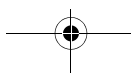
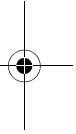
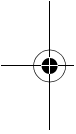
CLEANING AND MAINTENANCE

TROUBLESHOOTING GUIDE

AFTER-SALES SERVICE

INSTALLATION

DOOR REVERSIBILITY



BEFORE USING THE APPLIANCE

- Your new appliance is designed to be used in the household and similar applications such as:
 - kitchen areas in shops, offices and other working environments
 - farm houses
 - by clients in hotels, motels, residences, bed & breakfasts.

To ensure best use of your appliance, carefully read the operating instructions which contain a description of the product and useful advice.

Keep these instructions for future reference.

1. After unpacking the appliance, make sure it is not damaged and that the door closes properly. Any damage must be reported to the dealer within 24 hours of delivery of the appliance.
2. Wait at least two hours before switching the appliance on in order to ensure that the refrigerant circuit is fully efficient.
3. Installation and electrical connection must be carried out by a qualified technician according to the manufacturer's instructions and in compliance with local safety regulations.
4. Clean the inside of the appliance before using it.

SAFEGUARDING THE ENVIRONMENT


1. Packaging

The packing material is 100% recyclable and bears the recycling symbol. For disposal, comply with local regulations. Keep the packing materials (plastic bags, polystyrene parts, etc.) out of the reach of children, as they are a potential source of danger.

2. Scrapping/Disposal

The appliance is manufactured using recyclable material.

This appliance is marked in compliance with European Directive 2002/96/EC on Waste Electrical and Electronic Equipment (WEEE). By ensuring the correct disposal of this appliance, you can help prevent potentially negative consequences for the environment and health.

The symbol  on the appliance, or on the accompanying documents, indicates that this appliance should not be treated as domestic waste but must be taken to a special collection centre for the recycling of electrical and electronic equipment.

When scrapping the appliance, make it unusable by cutting off the power cable and removing the doors and shelves so that children cannot easily climb inside and become trapped.

Scrap the appliance in compliance with local regulations on waste disposal, taking it to a special collection centre; do not leave the appliance unattended even for a few days, since it is a potential source of danger for children. For further information on the treatment, recovery and recycling of this product, contact your competent local office, the household waste collection service or the shop where you purchased the appliance.

Information:

This appliance does not contain CFCs. The refrigerant circuit contains R134a (HFC) or R600a (HC) (see the rating plate inside the appliance).

Appliances with Isobutane (R600a): isobutane is a natural gas with low environmental. Caution is required, however, since isobutane is flammable. Therefore, it is essential to ensure that refrigerant pipelines are not damaged.

This product may contain Fluorinated Greenhouse Gases covered by the Kyoto Protocol; the refrigerant gas is inside a hermetically sealed system.

Refrigerant gas: R134a has a Global Warming Potential of (GWP) 1300.

Declaration of conformity

This appliance has been designed for preserving food and is manufactured in compliance with EC Regulation No. 1935/2004.



This appliance has been designed, manufactured and marketed in compliance with:

- safety objectives of the "Low Voltage" Directive 2006/95/EC (which replaces 73/23/CEE and subsequent amendments);
- the protection requirements of Directive "EMC" 2004/108/EC.

Electrical safety of the appliance can only be guaranteed if it is correctly connected to an approved earthing system.



PRECAUTIONS AND GENERAL RECOMMENDATIONS

INSTALLATION

- The appliance must be handled and installed by two or more persons.
- Be careful not to damage the floors (e.g. parquet) when moving the appliance.
- During installation, make sure the appliance does not damage the power cable.
- Make sure the appliance is not installed near a heat source.
- To guarantee adequate ventilation, leave a space on both sides and above the appliance and follow the installation instructions.
- Keep the appliance ventilation openings free.
- Do not damage the appliance refrigerant circuit pipes.
- Install and level the appliance on a floor strong enough to take its weight and in a place suitable for its size and use.
- Install the appliance in a dry, well ventilated place. The appliance is designed to operate in areas where the temperature comes within the following ranges, according to the climatic class given on the rating plate.
The appliance may not work properly if it is left for a long time at a temperature outside the specified range.

Climatic Class	Amb. temp. (°C)	Amb. temp. (°F)
SN	From 10 to 32	From 50 to 90
N	From 16 to 32	From 61 to 90
ST	From 16 to 38	From 61 to 100
T	From 16 to 43	From 61 to 110

- Make sure the voltage specified on the rating plate corresponds to that of your home.
- Do not use single/multi adapters or extension cords.
- For the water connection, use the pipe supplied with the new appliance; do not reuse that of the previous appliance.
- Power cable modification or replacement must only be carried out by qualified personnel or After-sales Service.
- It must be possible to disconnect the appliance from the power supply by unplugging it or by means of a mains two-pole switch installed upline of the socket.

SAFETY

- Do not use the appliance to store aerosol cans or receptacles containing propellants or flammable substances.
- Do not store or use petrol, flammable liquids or gas in the vicinity of this or other electrical appliances. The fumes can cause fires or explosions.
- Do not use mechanical, electric or chemical means other than those recommended by the Manufacturer to speed up the defrost process.
- Do not use or place electrical devices inside the appliance compartments if they are not of the type expressly authorised by the Manufacturer.
- This appliance is not intended for use by persons (including children) with reduced physical, sensory or mental capabilities or lack of experience and knowledge, unless they have been given supervision or instruction concerning use of the appliance by a person responsible for their safety.
- To avoid the risk of children becoming trapped and suffocating, do not allow them to play or hide inside the appliance.
- Do not swallow the contents (non-toxic) of the ice packs (in some models).
- Do not eat ice cubes or ice lollies immediately after taking them out of the freezer since they may cause cold burns.

USE

- Before carrying out any maintenance or cleaning operation, unplug the appliance or disconnect it from the power supply.
- All appliances equipped with an automatic icemaker and water dispenser must be connected to a water supply that only delivers drinking water (with mains water pressure of between 0.17 and 0.81 Mpa (1.7 and 8.1 bar)). Automatic ice-makers and/or water dispensers not directly connected to the water supply must be filled with drinking water only.
- Use the refrigerator compartment only for storing fresh food and the freezer compartment only for storing frozen food, freezing fresh food and making ice cubes.
- Do not store glass containers with liquids in the freezer since they may burst.

The Manufacturer declines any liability if the above advice and precautions are not respected.

HOW TO USE THE FREEZER

The freezer can be used for storing already frozen food and for freezing fresh food.

Switching on the freezer for the first time

- There is no need to set the freezer temperature on the thermostat because the appliance is already factory set.
- Plug in the appliance.
- Only place food in the freezer 2 hours after switching on.

Adjusting temperature

From MIN to MAX: make the internal temperature colder.

- Thermostat setting indicator:

MIN - for storing food for short periods;

NORMAL - for storing food for longer periods;

MAX + SUPER - for storing food for long periods and freezing fresh food.

Note:

Ambient air temperature, the frequency of door opening and the position of the appliance can affect the freezer internal temperature.

Take these factors into consideration when setting the thermostat knob.

Freezing

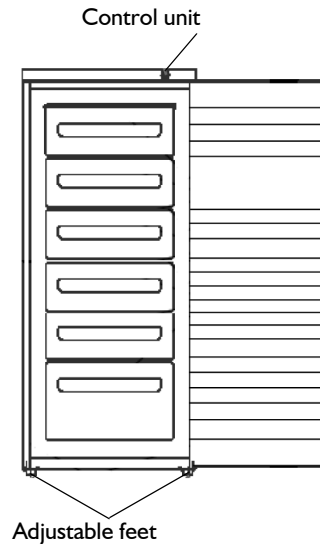
Place the amount of fresh food indicated on the rating plate in the middle compartment. Take care not to place the food directly in contact with food already frozen.

For optimum appliance performance, before freezing fresh food turn the thermostat knob to "SUPER", then place the food in the freezer and after 24 hours turn the knob back to "NORMAL".

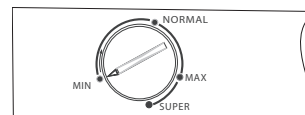
After placing fresh food in the freezer, 24 hours on "SUPER" function is generally sufficient; after 24 hours, deactivate the "SUPER" function (if provided).

Important:

When freezing only small amounts of food, the food can be placed in any compartment, with the exception of the bottom drawer. Furthermore, in order to save energy, when freezing small amounts of food the fast freeze function (if provided) need not necessarily be activated.



Control unit



Tips for freezing and storing fresh food.

- Before freezing, wrap and seal fresh food in: aluminium foil, cling film, air and water-tight plastic bags, polythene containers with lids or freezer containers suitable for freezing fresh food.
- Food must be fresh and of prime quality.
- Fresh vegetables and fruit should preferably be frozen as soon as they are picked to maintain the full original nutritional value, consistency, colour and flavour.

Note:

- Always leave hot food to cool before placing in the freezer.
- Eat fully or partially defrosted foods immediately. Do not refreeze unless the food is cooked after it has thawed. Once cooked, the thawed food can be refrozen.

Important:

The table alongside shows the recommended maximum storage time for frozen fresh foods.

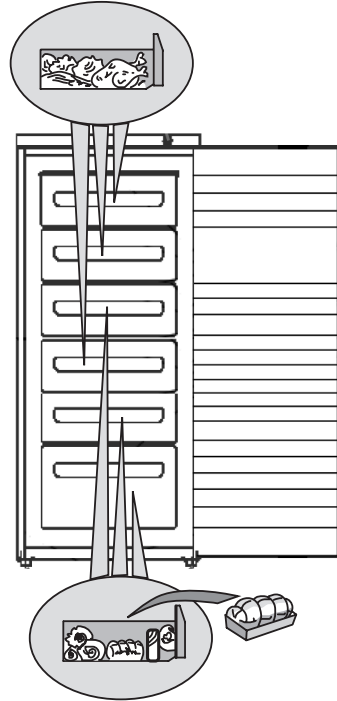
Classification of frozen foods

Put the frozen products into the freezer and classify them. The storage date should be indicated on the packs, to allow use within expiry dates.

Advice for storing frozen food

When purchasing frozen food products:

- Ensure that the packaging is not damaged (frozen food in damaged packaging may have deteriorated). If the package is swollen or has damp patches, it may not have been stored under optimal conditions and defrosting may have already begun.
- When shopping, leave frozen food purchases until last and transport the products in a thermally insulated cool bag.
- Once at home, place the frozen foods immediately in the freezer.
- If food has defrosted even partially, do not re-freeze it. Consume within 24 hours.
- Avoid, or reduce temperature variations to the minimum. Respect the best-before date on the package.
- Always observe the storage guidelines on the frozen food packages.



MONTHS	FOOD
1-3	
4-7	
8-12	

Removing the baskets

- Pull the baskets out fully, then lift them up slightly in order to remove.

Note:

Drawers may be removed in order to obtain increased storage space.

Ensure that the load does not exceed the limit (if present) indicated on the side walls of the appliance.

Making ice cubes

- Fill the ice cube tray 2/3 full and place it in the special freezer compartment.
- Do not use sharp or pointed instruments to detach the tray if it is stuck to the bottom of the freezer.
- Bend the ice tray slightly to remove the cubes.

Note:

The freezer door will not re-open easily immediately after closing. Wait a few minutes before opening again in order to allow for compensation of the vacuum created.

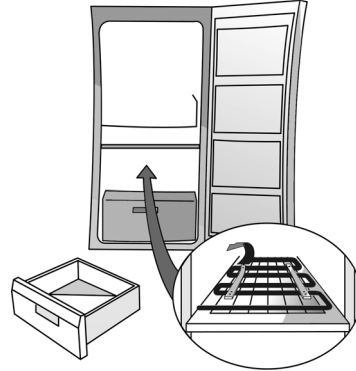


Fig. 1

HOW TO DEFROST AND CLEAN THE FREEZER

Before any cleaning or maintenance operation, always unplug the appliance or disconnect it from the power supply.

Defrost the freezer once or twice a year, or when the formation of ice on the refrigeration grilles is excessive.

It is perfectly normal for ice to form on the grilles. The amount of ice which forms and the rate at which it accumulates will depend on room temperature and humidity, and on the frequency with which the door is opened.

If possible, defrost the freezer when it is nearly empty.

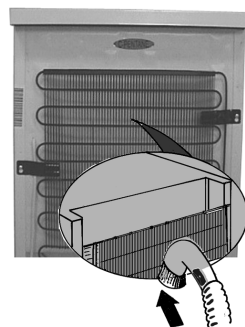
- Remove the food from the freezer, wrap in newspaper and group together in a cool place or in a portable cooler.
- Leave the freezer door open to allow the frost to melt.
- Clean the interior of the freezer with a sponge and warm water and/or neutral detergent. Do not use abrasive substances.
- Rinse the interior and dry thoroughly.
- Put the food back into the freezer.
- Close the freezer door.
- Plug in the appliance once again.
- Switch on the freezer.

CLEANING AND MAINTENANCE

Periodically clean the condenser at the rear of the appliance with a vacuum cleaner or brush.

Prolonged disuse

- Empty the freezer.
- Disconnect the freezer from the mains power supply.
- Defrost and clean.
- **Leave the door open to prevent formation of unpleasant odours and to eliminate any dampness.**



TROUBLESHOOTING GUIDE

1. The appliance is not working.

- Is there a power failure?
- Is the main power switch on?
- Do the household electrical system protection devices work correctly?
- Is the thermostat setting correct?
- Was the appliance switched on correctly?

2. Excessive frost build-up.

- Has the defrost water drain been positioned correctly?
- Is the door shut properly?

Attention:

- **The front edge of the appliance may be hot. This prevents the formation of condensation and is not a defect.**
- **Gurgling and hissing noises due to expansion in the refrigerant circuit are normal.**

AFTER-SALES SERVICE

Before contacting the After-Sales Service:

1. See if you can solve the problem yourself (see "Troubleshooting guide").
2. Switch the appliance off and then on again to see if the problem has been solved. If it has not, switch off the appliance again and repeat the operation after one hour.
3. If the problem persists after this course of action, contact After-sales Service.

Specify:

- the nature of the fault,
- the model,

- The Service number (the number after the word SERVICE on the rating plate inside the appliance),
- Your full address,
- Your telephone number and area code.

SERVICE 0000 000 00000



Note:

The direction of door opening can be changed. If this operation is performed by After-sales Service it is not covered by the warranty. The door cannot be reversed on models with front handle.

INSTALLATION

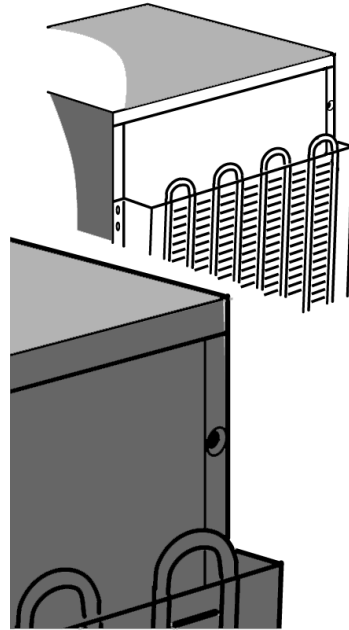
- Install the appliance away from heat sources. Installation in a hot environment, direct exposure to the sun or installation near heat sources (heaters, radiators, cookers) will increase power consumption and should therefore be avoided.
- If this is not possible, the following minimum distances must be respected:
 - 30 cm from coal or paraffin stoves;
 - 3 cm from electric and/or gas stoves.
- To optimize appliance efficiency, leave a 5 cm gap above the appliance and make sure that adjacent kitchen units are sufficiently distanced to allow air circulation.
- Install the appliance in a dry, well-ventilated place, and ensure it is level, using the front adjustment feet if necessary.
- Clean the interior.
- Fit the accessories.

Electrical connection

- **Electrical connections must be made in accordance with local regulations.**
- Voltage and power consumption are indicated on the rating plate inside the appliance.
- **Regulations require that the appliance be earthed. The manufacturer declines all liability for injury to persons or animals and for damage to property resulting from failure to observe the above procedures and reminders.**
- If the plug and socket are not of the same type, have the socket replaced by a qualified electrician.
- Do not use extension leads or adapters.

Disconnecting the appliance

It must be possible to disconnect the appliance by unplugging it or by means of a two-pole switch fitted upline of the socket.



DOOR REVERSIBILITY

The direction of door opening of your freezer can be changed.

- Make sure that the freezer is not connected to the power supply and that it is empty.
- Reversing the direction of door opening is a task which requires two people.

Tools required

- Phillips style screwdriver
- Flat bladed screwdriver
- 8 mm and 10 mm socket or spanner.

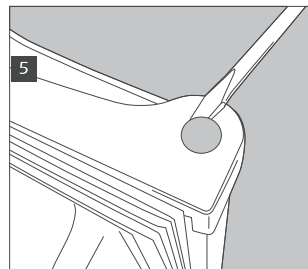
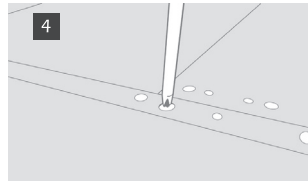
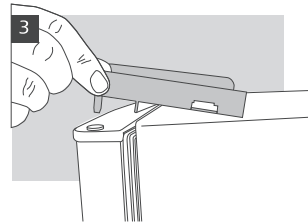
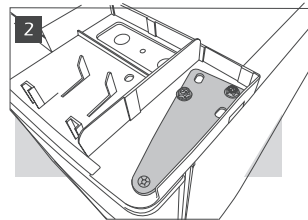
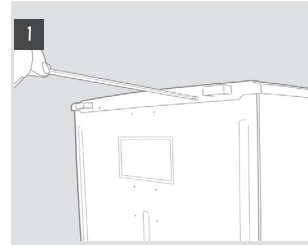
Lay the fridge/freezer on its back in order to gain access to the base, being careful not to tip it back by more than 45°. Rest it on the soft foam packaging or similar material to avoid damaging the cooling pipes at the rear of the appliance.

Remove the two screws on the rear of the fridge/freezer.
Lift the top off the fridge/freezer.

Use the 8 mm socket or spanner to remove the 2 hinge bolts.
Remove the 2 bolts from the opposite side.

Remove the bracket and plastic surround.
Remove and replace the pin in the bracket.
Refit on the opposite side of the fridge/freezer cabinet.

Remove the blanking plug from the new hinge side and refit it on the opposite side.



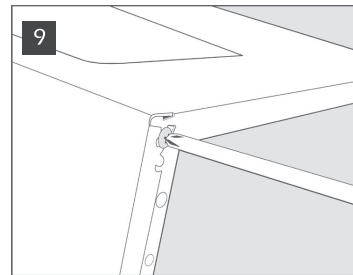
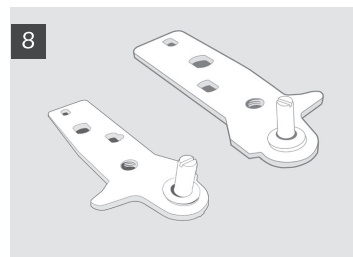
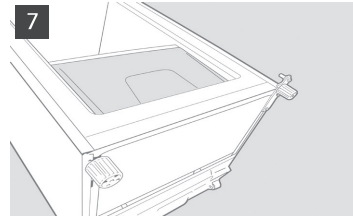
Remove the levelling feet by unscrewing.

Remove the bottom bracket using an 8 mm socket or spanner. Remove and replace the pin, using a 10 mm socket to unscrew the nut and a flat bladed screwdriver to remove the pin. You may need to push the pin through from the underside to remove fully.

Remove the screw on the base and refit it on the other side. Remove the blanking plates from the unused side of the fridge/freezer and refit them in the holes left by the brackets. Replace the door and brackets in reverse order. When replacing the feet take care to ensure the larger foot is on the side without the bracket. Check the door is aligned horizontally and vertically and that the seal fits properly all around before tightening the bottom hinge.

Note:

The direction of door opening can be changed. If this operation is performed by After-sales Service it is not covered by the warranty.



ELECTRICAL CONNECTION

1) For Great Britain only

Warning - this appliance must be earthed

Fuse replacement

If the mains lead of this appliance is fitted with a BS 1363A 13amp fused plug, to change a fuse in this type of plug use an A.S.T.A. approved fuse to BS 1362 type and proceed as follows:

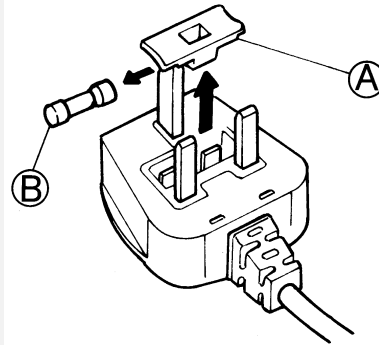
1. Remove the fuse cover (A) and fuse (B).
2. Fit replacement 13A fuse into fuse cover.
3. Refit both into plug.

Important:

The fuse cover must be refitted when changing a fuse and if the fuse cover is lost the plug must not be used until a correct replacement is fitted.

Correct replacement are identified by the colour insert or the colour embossed in words on the base of the plug.

Replacement fuse covers are available from your local electrical store.



2) For the Republic of Ireland only

The information given in respect of Great Britain will frequently apply, but a third type of plug and socket is also used, the 2-pin, side earth type.

3) Socket outlet / plug (valid for both countries)

If the fitted plug is not suitable for your socket outlet, please contact Whirlpool Service for further instruction. Please do not attempt to change plug yourself. This procedure needs to be carried out by a qualified Whirlpool technician in compliance with the manufactures instructions and current standard safety regulations.