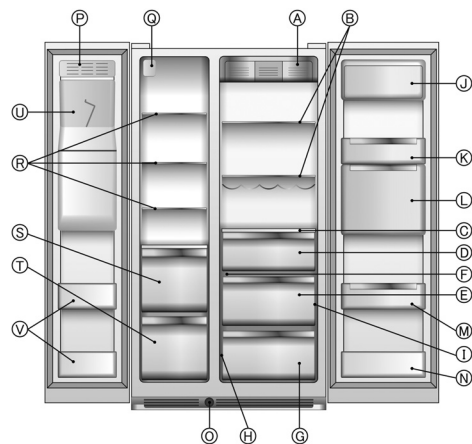


Connect the appliance to the water supply and power supply (see Installation manual).

Read the user handbook carefully before using the appliance.



Freezer compartment

- P. Automatic ice maker
- Q. Inside light
- R. Glass shelves / racks (depending on the model)
- S. Drawer / top basket (depending on the model)
- T. Drawer / bottom basket (depending on the model)
- U. Ice bucket
- V. Door trays

Refrigerator compartment

- A. Inside light
- B. Shelves
- C. Shelf - drawer lid
- D. Snack drawer (depending on the model)
- E. Crisper drawer
- F. Crisper drawer moisture control (where provided)
- G. Meat / crisper drawer
- H. Meat / crisper drawer temperature control (where provided)
- I. Rating plate
- J. Dairy compartment
- K. Door trays
- L. Fresh control and Nature fresh compartment (where provided)
- M. 2 litre door tray with bottle holder (depending on the model)
- N. 0.75 litre door tray.
- O. Water filter (depending on the model)

Specifications, technical data and images may vary from model to model.

6th Sense (Sixth Sense Function)

This activates automatically to signal that the appliance is working to reach optimal storage conditions.

Child Lock (Child Safety)

To lock/unlock the buttons on the control panel and the water/ice dispenser, press the "Reset filter/alarm" and "Vacation mode" buttons at the same time until the symbol is displayed and the acoustic signal sounds.

Eco Mode

This function enables you to save energy. To enable/disable the function, press the "Reset filter/alarm" and "Ice mode" buttons at the same time for 5 seconds until the acoustic signal sounds. When the function is enabled, the display only lights up when you use the appliance or the control panel, otherwise only the symbol is shown. Remember that this operation does not disconnect the appliance from the power supply.

Water filter (where provided)

The colour of the symbol indicates the condition of the filter.

- Green:** new filter
 - Blue:** filter in good condition.
 - Red (fixed):** filter running out.
 - Red (blinking):** filter needs replacing.
- After replacing the filter, press the "Reset filter/alarm" button until the symbol becomes green.

☎ For Europe only 00800-40088400 - www.whirlpool.eu/myfridge

Reset Filter Alarm (alarm mute button)

Press the "Reset Filter/Alarm" button to stop the acoustic alarm.

Malfunction Alarm

See section "What to do if...".

Blackout Alarm

See section "What to do if...".

Antibacterial filter (if installed)

Change the filter when the symbol blinks. After replacing the filter, press the "Reset filter/alarm" button until the symbol remains permanently on.

☎ For Europe only 00800-40088400 - www.whirlpool.eu/myfridge

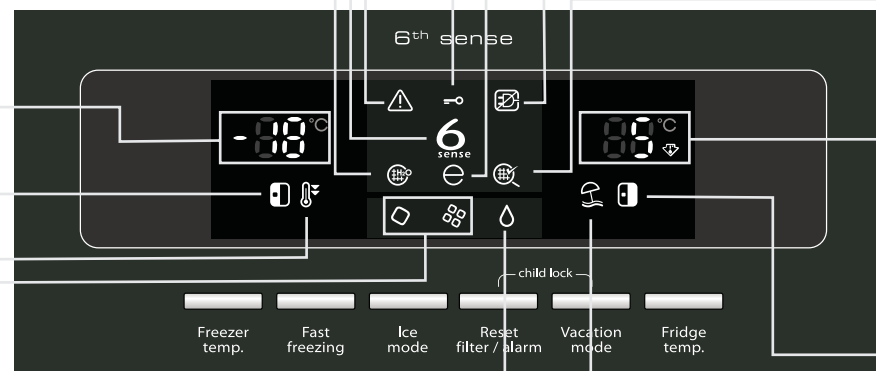
Freezer compartment temperature

Press the "Freezer temp" button to change the temperature setting.

Freezer compartment door open

Fast freezing

To be activated several hours before the food to be frozen is placed in the freezer compartment (24 hours before freezing large quantities of food). To activate this function, press the "Fast freezing" button: the symbol will appear on the display. The function disables automatically after 24 hours or can be switched off manually by pressing the button again. The maximum ice production can be achieved when this function is enabled (1.3 KG/24H).



Refrigerator compartment temperature

Press the "Fridge temp" button to change the temperature setting.

Refrigerator compartment door open

Ice mode (type of ice)

Press the "Ice mode" button to select the desired type of ice and to enable/disable the automatic ice maker.

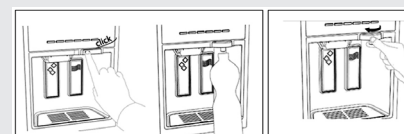
- = ice cubes
- = crushed ice
- no symbol shown = automatic ice maker disabled

Important: if the appliance is not connected to the water supply, the automatic ice maker must be disabled.

Turn the ice maker off before removing the ice bucket to stop ice cubes being dispensed accidentally.

Extracting the water dispenser (on some models only)

The water dispenser features a swivel spout for easy filling of bottles, jugs and other large receptacles. Extract the spout with a simple click (press and release) as shown in figure A. To return the spout to the initial position, manually rotate the swivel as shown in figure B.



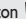

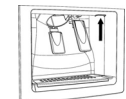
Vacation Mode

This function can be used during extended absences. Press the "Vacation mode" button to enable/disable the function. When the function is enabled, the related symbol lights up and the refrigerator compartment becomes much less cold. After activating this function, remove all perishable foodstuffs from the compartment and leave the door closed: the refrigerator will maintain the right temperature to prevent odours from forming. The freezer compartment remains enabled: it is therefore possible to continue to use it as usual.

Water

The symbol is always displayed and when the appliance is connected to the mains water supply, water delivery is always available.

| What to do if... | Possible causes | Solutions |
|---|--|--|
| Before contacting the After-sales Service, try to solve the problem by following the advice below. | | |
| The appliance is excessively noisy | Noises from appliances are normal since the fans and compressors for controlling its operation switch on and off automatically, for example: <ul style="list-style-type: none"> hissing when the appliance is switched on the first time or after a long period. gurgling when the refrigerant enters the pipes. humming when the water valve or fan are activated. rattling when the compressor starts up or when the ice drips in the bucket. a sudden thud when the compressor starts up or stops. | Some noises can be reduced by: <ul style="list-style-type: none"> levelling the appliance and installing it on a flat surface, separating and preventing contact of the appliance with the cabinets, making sure the inside parts are correctly positioned, making sure the bottles and containers are not touching each other. |
| The control panel is off and/or the appliance is not working | There may be a problem with the power supply to the appliance | Check that: <ul style="list-style-type: none"> there has not been a power failure. the plug is inserted properly into the power socket and the bipolar mains switch is in the right position (i.e. power supplied to the appliance). the safety protection devices in the domestic electrical system are working. the power cable isn't broken. the voltage is correct. |
| | The "Standby" (depending on the model) or "Eco mode" function may have been enabled. | <ul style="list-style-type: none"> Disable the function (see the Quick Start Guide). |
| If the motor seems to run too much | On hot days or if the room is warm, the motor naturally runs longer. Furthermore, if the appliance door has been left open for a while or if large amounts of food have been stored, the motor will run longer in order to cool down the interior of the appliance. | Avoid locations in direct sunlight or near a source of heat. |
| | There may be dust or fluff in the condenser. | Remove the front plinth (see installation manual) and clean the condenser using a vacuum cleaner. |
| | The doors may not be closed properly or the seals may not be intact. | Check that the doors are closed properly and that the door seals do not allow any air infiltration. |
| Excessive moisture inside the compartments. | If the room is very humid, it is normal for moisture to build up inside the appliance. | Install the appliance in a dry, well-ventilated place. |
| | The air ducts may be blocked. | Make sure the air ducts inside the compartments are not blocked, as this prevents the circulation of cold air. |
| It is not cold enough inside the compartments | There could be various causes | Check that: <ul style="list-style-type: none"> the doors close properly. the appliance is not near a heat source. the air ducts inside the compartments are not blocked, as this prevents the circulation of cold air. the "Vacation mode" function is not enabled (see Quick Start Guide for certain models only). If necessary, lower the temperature. |
| The area in contact with the seal is hot. | This is normal in hot weather and when the compressor is running. | No action is required. |
| If the doors do not open and close properly. | The door seals may be dirty or sticky. | Clean the seals. |
| | The appliance may not be level. | If necessary, level the appliance (see Installation manual). |
| The internal light is not working. | The "Standby" function may have been enabled (depending on the model). | Disable the function (see the Quick Start Guide). |
| | The bulb may be burnt out. | Replace the bulb (see Instructions for Use, section "Maintenance and Cleaning"). |
| The control panel will not do anything: every time a button is pressed, the acoustic signal sounds. | The "Child Safety", "Key Lock" or "Ice/water dispenser lock" function may have been enabled. | Disable the function (see the Quick Start Guide). |
| The "Compartment door open" symbols blinks and an acoustic signal sounds (if present) | Open door alarm. The alarm is activated when the doors are left open for more than 2 minutes. | Close the doors or press the mute alarm button to switch off the acoustic signal. |
| There are letters on the display, and an acoustic signal is sounding (if provided and not previously disabled). | Malfunction Alarm The alarm indicates that a technical component has malfunctioned. | Call an authorized After-Sales Service. Press the mute alarm button to switch off the acoustic signal. |
| | The "Eco mode" function may have been enabled. | Disable the function (see the Quick Start Guide). |

| What to do if... | Possible causes | Solutions |
|--|---|---|
| The red Blackout Alarm LED and the freezer temperature display are blinking, and the acoustic signal is sounding (if provided). | Blackout Alarm. This alarm activates when there has been an extended power failure causing the freezer compartment temperature to rise. The value flashing on the freezer display is the highest temperature reached during the power failure. | Press the mute alarm button to switch off the acoustic signal. Check the state of foodstuffs before consuming them. |
| | This alarm may be activated when the appliance is used for the first time. | Press the mute alarm button to switch off the acoustic signal. The appliance needs approximately 2-3 hours to reach the correct temperature to store a normal fridge load of food. |
| The "Anti-bacterial filter" symbol is red and/or is blinking. | Anti-bacterial filter exhausted (if installed). | Replace the filter (see the Quick Start Guide). |
| The "Water filter" symbol has changed colour. | Water filter running out/exhausted (where provided). | Replace the filter (see the Quick Start Guide). To replace the filter, refer to the Instructions for Use. |
| If the appliance has a water and ice dispenser: | | |
| The automatic ice-maker does not work. | A new appliance takes about a night to reach the ideal temperature for producing ice. | Wait for the time required for the temperature inside the freezer to reach the set value. |
| | The automatic ice maker may not be enabled (in some models it can be disabled). | Refer to the Quick Start Guide to enable the automatic ice maker again (on some models only). |
| | Water may not reach the automatic ice maker. | Check that the product is connected to the mains water supply and that the water tap is open. |
| | The water filter may be clogged or installed incorrectly. | Refer to the filter installation instructions to ensure that the filter was installed correctly and is not clogged. If installation or clogging is not a problem, call qualified personnel. |
| The dispenser does not dispense ice when the lever is pressed (or when the "ice" button  is pressed, on models without an ice lever). | This is normal when the freezer door is open, or if the ice bucket is not installed correctly. | Close the freezer door and/or check that the ice bucket is installed correctly. |
| | The "Child Safety" or "Ice/water dispenser lock" function may have been enabled. | Disable the function (see the Quick Start Guide). |
| | Ice cubes may be stuck because the ice dispenser has not been used for some time: The dispenser may not have been used for extended periods, causing the ice cubes to stick together. | Change the ice selection from "ice cubes" to "crushed ice" or vice versa (in some models only), so as to remove any ice blocks. If the dispenser continues not to dispense ice, wait for two minutes and then repeat this operation. Shake the ice bucket to separate the cubes and increase the holding capacity. It is advisable to throw away the old ice and make new ice. |
| | The ice dispenser lever may have been pressed for too long (only on certain models). | Wait about 3 minutes for the dispenser motor to reset |
| The dispenser does not dispense water when the lever is pressed (or when the "water" button  is pressed, on models without an ice lever). | During the first delivery, there will be a delay of 15 to 20 seconds due to the system needing to fill with water. | Wait for the time required for the system to fill. |
| | The "Child Safety" or "Ice/water dispenser lock" function may have been enabled. | Disable the function (see the Quick Start Guide). |
| | The water filter may be clogged or installed incorrectly. | Refer to the filter installation instructions to ensure that the filter was installed correctly and is not clogged. If installation or clogging is not a problem, call qualified personnel. |
| There is condensation in the ice and water dispenser area. | The dispenser anti-condensation device may have been disabled (depending on the model) | Reactivate the function by pressing the anti-condensation switch in the ice/water dispenser area (marked with an arrow in the figure), depending on the model. |
| There is condensation on the door. | The door anti-condensation function may have been disabled (depending on the model) | Reactivate the function by pressing the anti-condensation switch in the ice/water dispenser area (marked with an arrow in the figure), depending on the model.  |
| The automatic ice maker | Since the appliance is equipped with an automatic ice-maker, you may hear a humming sound (coming from the water valve), water trickling and the sound of ice falling into the bucket. | Disable the automatic ice maker if you do not need it (see the Quick Start Guide), depending on the model. |